

AWG Field Trip: Explore Hawaiian Volcanoes!

August 8-12, 2010



Pahoehoe lava flow.

AWG's Hawaii Volcanoes Field Trip will focus entirely on the characteristics of shield-type volcanism which is best seen in Hawaii Volcanoes National Park on the Big Island, Hawaii. If interest warrants, an optional day at the end will be organized to view ancient deposits and erosion on the island of Oahu. Prior to your arrival, you can follow the progress of the ongoing (since 1982) eruption of the Kilauea volcano via the U.S. Geological Survey web site: <http://hvo.wr.usgs.gov/kilauea/update/images.html>

Costs

Costs for the field trip in addition to your airfare, lodging, and evening meals are expected to be approximately \$600. These costs will include van transportation and fuel, picnic lunches and snacks, guide and entrance fees, and all printed materials. A deposit for \$300 is due by April 30. Eight participants are required for the trip to run and a maximum of 24 participants can be accommodated. For registration and release forms, go to www.awg.org/Trips/index.html.

Getting There

All of the major airlines fly either directly into Hilo International Airport or to Honolulu International Airport (HNL). Local flights depart Honolulu for Hilo every few hours from 6 am to 7:30 pm. The Naniloa hotel does not have an airport shuttle. A taxi to the hotel takes about 5 minutes.

Lodging

Rooms are available at the Naniloa Volcanoes Resort in Hilo at a special rate of \$85 per night double occupancy if you book online at www.hottours.us/. All pickups and drop-offs will be at the Naniloa, 93 Banyan Drive, Hilo, Hawaii, 96720 (808-969-3333 or 808-969-6622).

What to Bring

The weather will be generally warm, but can be changeable so bring layers for hiking. You'll need sunscreen, a hat and a neckerchief to prevent sunburn. A pair of jeans for hiking on the lava works well to prevent cuts and scratches. Bottled water will be available for you, but feel free to bring your favorite canteen and beverage of choice. Bring a flashlight or headlamp for caves. Bring binoculars if you are a birding enthusiast as the park is home to many endangered bird species. If you decide to venture up to the summit of Mauna Kea, you will need warm clothing, head covering and gloves.

Logistics

The field trip schedule on page 7 is tentative and depends on weather and the status of the eruption. Hawaii Volcanoes National Park closes hiking trails if they pose a danger to the public. Approximate distances are listed for lengthy hikes.

Warning

We will be hiking *in* an active volcano. Air quality will depend on the wind direction. Anyone with respiratory problems is advised *not* to participate in this field trip.

Optional Activities

If anyone wants to visit the astronomical observatories on Mauna Kea, I will be happy to take names and make a group reservation for you. Be aware that transportation to and from the hotel to the observatories is expensive. The Institute for Astronomy has some useful information on its website: www.ifa.hawaii.edu/mko/visiting.shtml.

Those interested in an Oahu field trip on Saturday, August 14, should also contact me.

Questions?

Contact Pat Cooper at pcooper@hawaii.edu.

Dr. Patricia Cooper, AWG's Pacific Delegate, will be leading AWG's Hawaii Volcanoes Field Trip. Pat is the Associate Dean for Academic Affairs in the School of Ocean and Earth Science and Technology (SOEST) at the University of Hawai'i, Manoa.



Visitors watch Kilauea lava enter the ocean.

Tentative Hawaii Field Trip Schedule: August 8-12, 2010

Sunday, August 8

Arrive Hilo by 1600

1800 Orientation Meeting, Naniloa Volcanoes Resort

Monday, August 9

0800 Depart Naniloa

0900 Hawaii Volcanoes National Park Visitor Center

1000 Crater Rim Drive to Hawaii Volcano Observatory (HVO)
Behind-the-Scenes Tour of HVO

1200 Lunch

1300 Kilauea Iki Pit Crater (4-mile hike)

1600 Thurston Lava Tube

1900 Optional night-time observing at Kilauea-side lava ocean entry site (~ 3-mile hike)



Kilauea lava fountain.

Tuesday, August 10

0800 Depart Naniloa

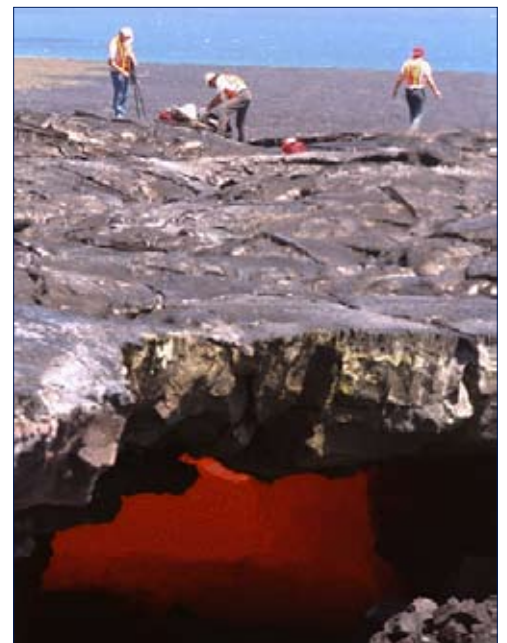
0900 Kaakepa Cone and Kapoho Village

1100 Puna Geothermal Plant

1200 Lunch at Lava Tree Mold Park

1300 To Kalapana lava flow ocean entry point (2 to 7-mile hike, depending on location)

Highlights of 1959 eruption en route to Kalapana



Kilauea skylight.

Wednesday, August 11

0800 Depart Naniloa

0900 Devastation Trail

1030 Hiiaka Pit Crater, Pauahi Pit Crater, Mauna Ulu (1969-74) and Puu Huluhulu (prehistoric cone)(about 1-mile hike)

1230 Lunch

1330 Puu Loa Petroglyphs (about ½-mile hike)

1430 To Hilo

1530 Wailuku River "Boiling Pots" and Kaumana Cave (lava tube)

Thursday, August 12

0800 Depart Naniloa

0900 Mid- to Late 1800's Mauna Loa lava flows

1000 1935 Mauna Loa flow

1100 Mauna Kea cinder cones and ash fall

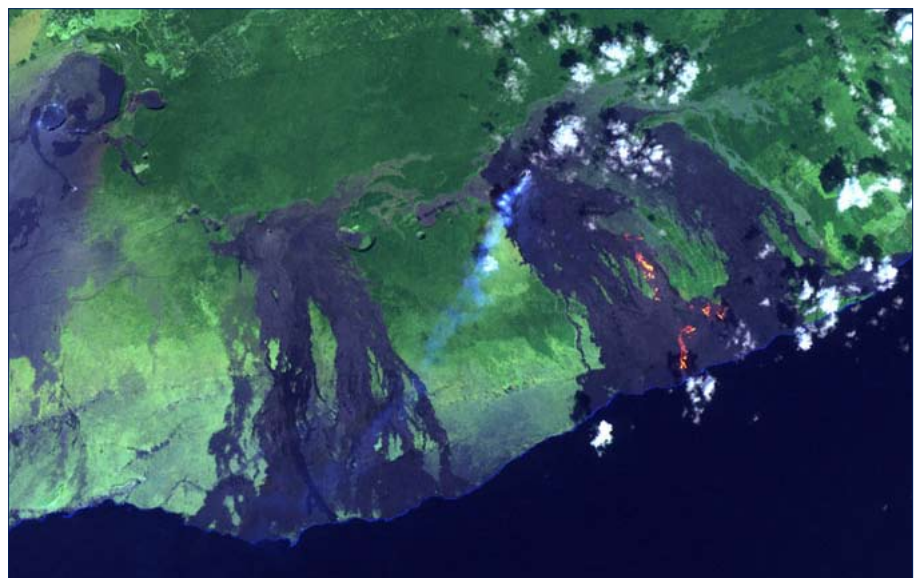
1200 Pohakuloa Camp, terminal moraine (Yes! Glaciation in Hawaii!)

1230 Lunch

1330 Hamakua Coast to Hilo

Pau

(Hawaiian for end)



Kilauea lava flows seen from the air. (Photo: Peter Mouginis-Mark)